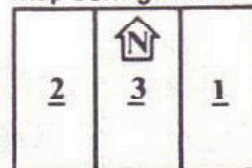


PanzerBlitz Situation #24

SOVIET ASSAULT ON FORTIFICATIONS: BALAKLAVA SECTOR (7/5/44). At the end of the spring, 1944 campaign in the Crimea, German and Rumanian forces were pushed into an ever-shrinking ring around Sevastopol. As the Kriegsmarine attempted to evacuate the 17th Army, the rear guard occupied a final defensive line just outside the city. The Russian objective at the southern end of the line was Sapun Heights, from where artillery could cover the whole anchorage.

Map Configuration



★ RUSSIAN FORCES



Assault elements of the Independent Coastal Army set up on board 1 East of the road running between 1A3 and 1G8, after the Germans.

12 A 6 1 35 C 11 9	24 H 20 122 93 0	14 A 8 50 85 11	40 H 10 50 152 7	8 I 1 12 185 1	40 H 20 122 93 0	3 M 12 87 85 1	6 I 5 18 162 1
12	2	2	2	6	2	4	10

3 I 2 8 111 1	12 A 5 N 2 32 0	0 C 0	2 C(I) 1 2 444 10	0 - 0 1 202 0
2	6	17	6	2

VICTORY CONDITIONS:

Russians get 1 point for each unit on Hills 132 and 129 at end of game (hilltop hexes only).

Germans get 5 points for each unit on those hills. Side with most points wins.

✚ GERMAN FORCES



The German Fusilier Company and JagdTiger set up on Hill 132. All other units set up anywhere on boards 1 and 3 West of the Board 1 road running between 1A3 and 1G8. Germans set up first.

12 A 8 12 87 6	2 H 12 75 87 0	3 I 6 8 151 1	0 C 0 WAGNER 111 3	3 M 12 87 85 1	20 H 12 150 72 0	13 A 6 75 33 0	15 M 20 178 91 0
2	3	17	4	3	2	3	4

0 C 0 1 426 12	2 I 4 5 171 1	8 A 5 50 21 0	40 40 111 1	0 - 0 1 202 0
1	3	2	8	3

3 I 6 8 149 1	6 I 3 6 185 1	3 M 12 87 85 1	22 A 12 18 87 5
1	2	1	1

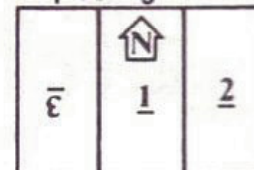
Fusilier Company

Rus moves first														END
Turn	1	2	3	4	5	6	7	8	9	10	11	12		

PanzerBlitz Situation #25

BLOCKING ACTION: MADONA SECTOR, LATVIA (22/9/44). The collapse of Army Group Center left AG North stranded in the Baltic states. As AG North withdrew into an enclave on the Courland peninsula, Russian spearheads reached out, attempting to split the Germans and defeat them in detail. The worst crisis came when the 2nd Baltic Front smashed the German 10th Corps at Madona; a short dash to Riga and the whole evacuation from Estonia and Latvia would be intercepted.

Map Configuration



★ RUSSIAN FORCES



A spearhead of the 3rd Shock Army enters on Eastern edge.

5 I 4 16 146 1	7 A 3 3 14 0	8 I 1 12 181 1	3 M 12 87 85 1	24 M 20 122 93 0	3 H 10 75 87 0	3 I 2 8 112 1	0 C 0 1 426 12
9	3	6	6	3	2	2	17

40 H 20 122 93 0	14 A 8 50 85 11	40 H 10 50 152 7	15 A 8 10 185 11	18 A 8 12 185 1	0 - 0 1 202 0	2 C(I) 1 2 444 10
2	2	2	6	2	2	6

✚ GERMAN FORCES



A battle group of the Nordland Division enters first on West edge of board.

16 A 12 12 85 10	14 A 8 8 185 1	12 A 8 12 87 8	3 I 6 8 149 1	6 I 3 6 185 1	20 A 20 6 850 8	40 H 32 5 621 8	60 H 24 6 831 8
9	9	3	16	4	1	1	1

2 H 4 3 531 16	20 A 20 1 42 0	2 C(I) 4 4 445 10	0 C 0 1 424 12
3	2	10	12

VICTORY CONDITIONS:

Award each side 1 point for every enemy unit destroyed. Award the Russians 2 points for each unit moved off the Western edge of the map. Side with the most points wins.

Ger moves first														END
Turn	1	2	3	4	5	6	7	8	9	10	11			